

# Automotive

## Web-Enabled Software Meeting the Needs of the Automotive Industry

### HMI Solutions for Automotive Manufacturing

*Extensive alarming, trending, reporting, visualization and IT data integration*

### Project Management and Deployment Tools

*Easily deploy projects, collaborate and manage applications*

### Reduce Cost of Integration and Ownership

*Open architecture protects investment from hardware obsolescence*

### Data Historian Logs to Secure Databases

*Industry standard databases such as Microsoft® SQL Server, MSDE, Microsoft Access™, Oracle® and more*

### Web-Based Visualization for Plant-Wide Manufacturing

*View cell and station information via the Internet and intranet using a Web browser*

### Connect Real-Time Production to Corporate IT Systems

*Integrate factory and plant floor information*

### Plug and Play with Popular PLCs and Existing HMIs

*Fast, easy OPC communications without multiple tag databases*

### Reduce Downtime with Multimedia Alarm Notification

*Schedule and deliver operator alerts via e-mail, phone, fax, SMS pagers and more*

### Mobilize Operators, Maintenance and Management Personnel

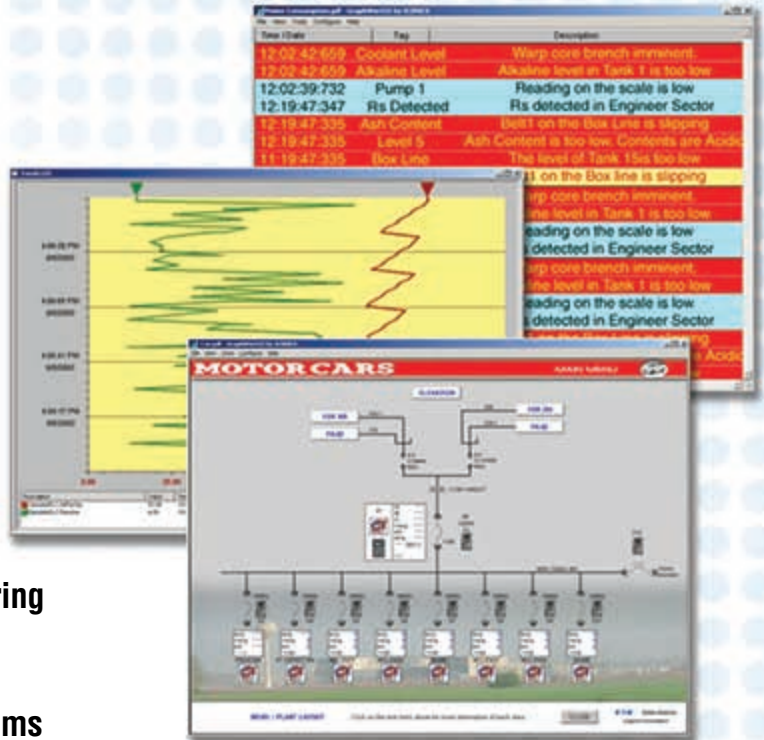
*Access critical data via intranet, Internet, Web, Pocket PCs, or mobile phone*

### Security Server Enforces Logins and Monitors Access 24/7

*Global security across corporate LANs, WANs and the Internet*

### Automated Reporting and Data Analysis

*Collect and report birthing information, production counts, machine utilization, SPC and quality data*



*"Proven Innovative Solutions  
for Automotive Manufacturing"*



**Visualize Your Enterprise!™**



The **ICONICS GENESIS32™** suite of applications offers features and functions specifically designed to aid in the cost-efficient management and control of automotive manufacturing operations.

#### **Automotive Industries Served**

For systems requiring extensive monitoring and control, the following automotive industries are benefiting from ICONICS' solutions:

- Factory Information Systems (FIS)
- Manufacturing Assembly
- Power Train Assembly
- Engine Test
- Paint Shop
- Robotic Welding and Material Handling
- And Many More...

#### **Benefits**

Customers who are deploying ICONICS solutions within their automotive manufacturing operations will enjoy many potential benefits:

- Enhanced quality control through SPC and SQL
- Real-time data exchange with suppliers
- Scalable solutions from embedded controllers to full operator stations
- Interact with your plant from a browser, wireless handheld device, or mobile phone



For further information call  
**508-543-8600**  
or visit our Web site at  
**www.iconics.com**



**Visualize Your Enterprise!™**

# Automotive

## **Overview**

The **ICONICS GENESIS32™** automation software suite provides automotive companies with powerful tools to minimize downtime, reduce costs of operation, minimize applications development and bridge the gap between corporate IT and the production floor.

## **HMI Solutions for Automotive Manufacturing**

Fast and easy integration into your product solutions using state-of-the-art technology, fifth generation HMI, SCADA and control software applications as a fully integrated suite or as modular components to your requirements.

## **Project Management and Deployment Tools**

Deploy a project by simply packing it and then unpacking it on the target computer. GENESIS32 is integrated with Microsoft Visual SourceSafe® technology for accurate project management.

## **Reduced Cost of Integration and Ownership**

Open standards such as OPC, Microsoft® Windows®, and Microsoft SQL Server® databases protect your automation investment from manufacturers' proprietary technology obsolescence that can come with changes in supplier strategy, ownership or finances.

## **Data Historian Logs Data to Secure Standard Databases**

Both the **ICONICS AlarmWorX32** Logger and the **ICONICS TrendWorX™32** Logger record their information to industry standard databases, including Microsoft SQL Server, MSDE, Microsoft Access, and Oracle.

## **Web-Based Visualization for Plant-Wide Manufacturing**

With thin-client WebHMI solutions, automotive users no longer need to install proprietary HMI software, licenses and individual HMI screens on each operator station. Files and licensing are server-based for trouble-free maintenance and deployment.

## **Connect Real-Time Production to Corporate IT Systems**

Any data available with proper security through your IT network may be displayed or modified within the GENESIS32 software suite via OPC, ODBC and OLEDB open database connectivity. Database-to-database transactions and reporting are flexible with **ICONICS' BizViz** software suite.

## **Plug and Play with Popular PLCs and Existing HMIs**

Connect to existing devices quickly and easily using open-standard OPC servers. Connect directly to dozens of popular existing PLCs and other automation equipment for fast communications.

## **Reduce Downtime with Multimedia Alarm Notification**

Quickly alert operations, maintenance and purchasing personnel to problems. **AlarmWorX™32** Multimedia, which is based on OPC Alarm and Events, provides alarm summary reporting and alarm logging to Microsoft Access, MSDE, Microsoft SQL Server and Oracle® databases. Connect alarms to e-mail, faxes, telephones, marquees, pagers, instant messaging, SMS, mobile phones and voice systems. Be notified wherever you may be!

## **Mobilize Operators, Maintenance and Management Personnel**

Make operators and managers more efficient with flexible access to data wherever they may be. WebHMI delivers operator and supervisory screens across intranets or the Internet with full global network security.

## **Security Server Enforces Logins and Monitors Access 24/7**

GENESIS32 delivers its full security system across a company's intranet or even across the Internet. So whether logged onto a local workstation or dialing in from home, the system is secure and traceable. The **ICONICS GENESIS32** suite of software applications offers the Security Server, a software component designed to restrict user access rights to various parts of the system. Not only are certain files and/or applications restricted, but specific features within the software modules may also be restricted on a per-user basis.

## **Automated Reporting and Data Analysis**

Production data collected from any plant floor data source can quickly and easily be visualized in Microsoft Excel. Choose a pre-built template or create your own. Information from different data sources can be merged and viewed on a single worksheet. Reports can be scheduled based on a wide variety of events such as time, date, alarm level and calculation.

100 Foxborough Blvd. Foxborough, MA 02035 USA, Tel: 508 543 8600, Fax: 508 543 1503

Europe BV, Tel: 31 252 228 588, Fax: 31 252 226 240 • England, Tel: 44 1384 27 55 00, Fax: 44 1384 40 16 42

Germany, Tel: 49 5723 74 98 69, Fax: 49 5723 74 98 79 • Australia, Tel: 61 29 898 3211, Fax: 61 29 898 3411

Czech Republic, Tel: 420 377 183 420, Fax: 420 377 183 424 • Italy, Tel: 39 347 8199250, Fax: 39 010 6014091

E-Mail: [info@iconics.com](mailto:info@iconics.com) Web: [www.iconics.com](http://www.iconics.com)

© 2006 ICONICS, Inc. All rights reserved. Specifications are subject to change without notice. GENESIS, GENESIS32, Pocket GENESIS, BizViz and their respective modules, OPC-To-The-Core, and Visualize Your Enterprise are trademarks of ICONICS, Inc. Other product and company names mentioned herein may be trademarks of their respective owners.

ICO-ILT-001