

BridgeWorX™

Real-Time Workflow for Data Bridging

Fast and Intuitive Graphical Workflow Designer

Develop transaction workflows using highly intuitive graphical tools. Use the function block graphical designer to connect multiple data sources, define, calculate and implement business rules

Scalable .NET Architecture

Take maximum advantage of the latest .NET technology. Leverage ADO.NET for native data-mining and workflow capabilities

Data Mine Any Real-time Data Source

Utilize a large collection of function block data connectors to data mine data sources such as Microsoft SQL Server, Oracle, SAP, plant historians, OPC and more!

Powerful Transaction Workflow Scheduler

Schedule transactions and workflows based on periodic time and date, OPC tags, Alarms and Events, Database Values, File attributes, and more!

Intuitive Web Interface with Integrated Security

Three tier security access rights integrate with Windows NT or Active Directory for secure access over LANs, WANs and the Internet

Centralized Unified Data Manager

Access and modify all transaction parameters from a centralized location. Configure scheduling triggers and create expressions for reuse in other applications

Real-time OPC Compliance

Data-mine OPC data, OPC alarms and events, and historical data in real time

Extensive Web Services Data Integration

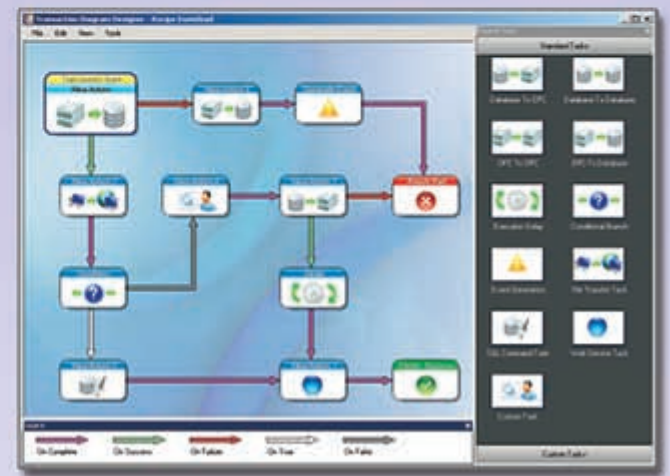
Connect to a greater variety of Web services, use custom classes, SOAP headers, arrays, datasets and more!

Custom User Tasks

Create custom transaction and execution blocks using Visual Studio .NET. Use VB .NET or C# to create libraries of BridgeWorX custom function blocks

Post Transaction Alerts

Notify via email, Fax or SMS Message upon transaction execution



"Graphical Workflow for Manufacturing Intelligence"



Visualize Your Enterprise!™





BridgeWorX™ Microsoft .net

Enterprise Data Bridging Workflow Software with No Programming

BridgeWorX is one of the key components of the BizViz Suite, performing efficient data exchange to and from any database or data source. Schedule secure transactions with real-time or historical data to support more informed and accurate decision-making across the enterprise.

Advantages of BridgeWorX

A unique visual transaction data-mapping configuration wizard assists in transferring information between real-time OPC manufacturing devices and corporate business information systems. BridgeWorX data-mining technology can access Microsoft SQL Server®, Oracle®, Microsoft Access, SAP® and virtually any real-time or archived manufacturing or business data source. Using the powerful configuration tools, one can schedule transactions based on real-time OPC data, alarms, events, time and date, as well as database or file attributes.

Transaction Blocks Included!

BridgeWorX comes complete with a variety of transaction blocks that can carry out data integration and interface management within automation, MES, and ERP applications, including unique user-defined "logic" and diagram "workflow" definitions.

ICONICS Markets Served

ICONICS has more than 200,000 systems running in over 20,000 plants worldwide. The following industries are benefiting from ICONICS solutions:

- Aerospace & Defense
- Automotive
- Biotechnology
- Building Automation
- Chemical & Petrochemical
- Consumer Packaged Goods
- Financial
- Food & Beverage
- Government
- Machine Builders
- Metals & Mining
- Oil & Gas
- Pharmaceuticals
- Power & Utilities
- Pulp & Paper
- Semiconductors
- Water & Wastewater

For further information call
508-543-8600
or visit our website
www.iconics.com



Visualize Your Enterprise!™

Data Management for Manufacturing Intelligence

Looking for a data integration and interface management product that requires no programming? BridgeWorX will automatically exchange data between devices and enterprise systems. Easily create reliable systems for batch management, lot tracking, traceability and more, with no scripting. This user-friendly, easy-to-configure, transaction-based product works with OPC and most databases, such as Microsoft® SQL Server®, Microsoft Access, Oracle, SAP and other ODBC-compliant databases.

Cost Savings and Quick ROI

The unique data-mapping configuration capabilities of BridgeWorX require no coding, resulting in quicker implementation of data transfer and interface management projects. BridgeWorX greatly reduces time-consuming custom programming and associated training costs for those skills. Built-in diagnostic tracing capabilities help track errors to their source for quick problem resolution and faster project startups. BridgeWorX visual transaction maps are intuitive and allow new users to modify systems as needs change without editing reams of custom script, resulting in reduced long-term cost of ownership and faster ROI.

No Custom Programming Required

BridgeWorX provides a complete solution requiring no coding for data extraction from source to optional data manipulation before writing to the target system. BridgeWorX eliminates the need for knowledge of the participating source and destination systems.

Transaction Blocks

BridgeWorX comes with several transaction blocks that can be configured to carry out data integration and interface management among automation systems, MES and ERP applications. One unique feature is the definition of user defined "Logic" and diagram "Flow." Transaction blocks are connected in visual "workflow diagrams" that can be configured for interaction with humans, machines or databases.

- OPC to Database
- OPC to OPC
- Web Service Block
- SQL Command Block
- Conditional Branch Block
- .NET Custom Block
- Database to Database
- Database to OPC
- Event Generation Block
- Execution Delay Block
- File Transfer Block
- Status Block

Advanced Scheduling Support

The powerful BridgeWorX Scheduling Engine allows for the simultaneous execution of transactions. Transactions can be triggered on the following criteria:

- Operator commands
- Real-time alarm or event
- Expressions or calculations
- File attribute change
- Recurring time and date
- Real-time OPC or SNMP data value
- Enterprise database value or query
- Windows NT Event

Powerful Microsoft .NET Data-Mining and Transformation

BridgeWorX is designed from the ground up, based on Microsoft .NET technologies. Connecting to source and target systems is fast, efficient and easy to configure. ICONICS brings you the most advanced data integration and interface management tool available today, taking maximum advantage of Microsoft's most powerful technologies. BridgeWorX uses Microsoft .NET technology to move data from the source systems to target systems.

Enterprise Level Workflow and Business Logic

Integrating BridgeWorX with the GENESIS32™ product suite allows you to coordinate information between multiple plant-level systems. Coordinate important management systems with machines, and operator action, across a distributed network. BridgeWorX automates the execution of your business logic to quickly and easily distribute data from these multiple plant-level systems to the enterprise.



Transaction Blocks

100 Foxborough Blvd. Foxborough, MA 02035 USA, Tel: 508-543-8600, Fax: 508-543-1503
Europe BV, Tel: 31 252 228 588, Fax: 31 252 226 240 • England, Tel: 44 1384 27 55 00, Fax: 44 1384 40 16 42
Germany, Tel: 49 5723 74 98 69, Fax: 49 5723 74 98 79 • Australia, Tel: 61 29 898 3211, Fax: 61 29 898 3411
Czech Republic, Tel: 420 377 183 420, Fax: 420 377 183 424 • Italy, Tel: 39 347 8199250, Fax: 39 010 6014091
E-Mail: info@iconics.com Web: www.iconics.com

© 2006 ICONICS, Inc. All rights reserved. Specifications are subject to change without notice. GENESIS, GENESIS32, Pocket GENESIS, BizViz and their respective modules, OPC-To-The-Core, and Visualize Your Enterprise are trademarks of ICONICS, Inc. Other product and company names mentioned herein may be trademarks of their respective owners. ICO-PLT-009